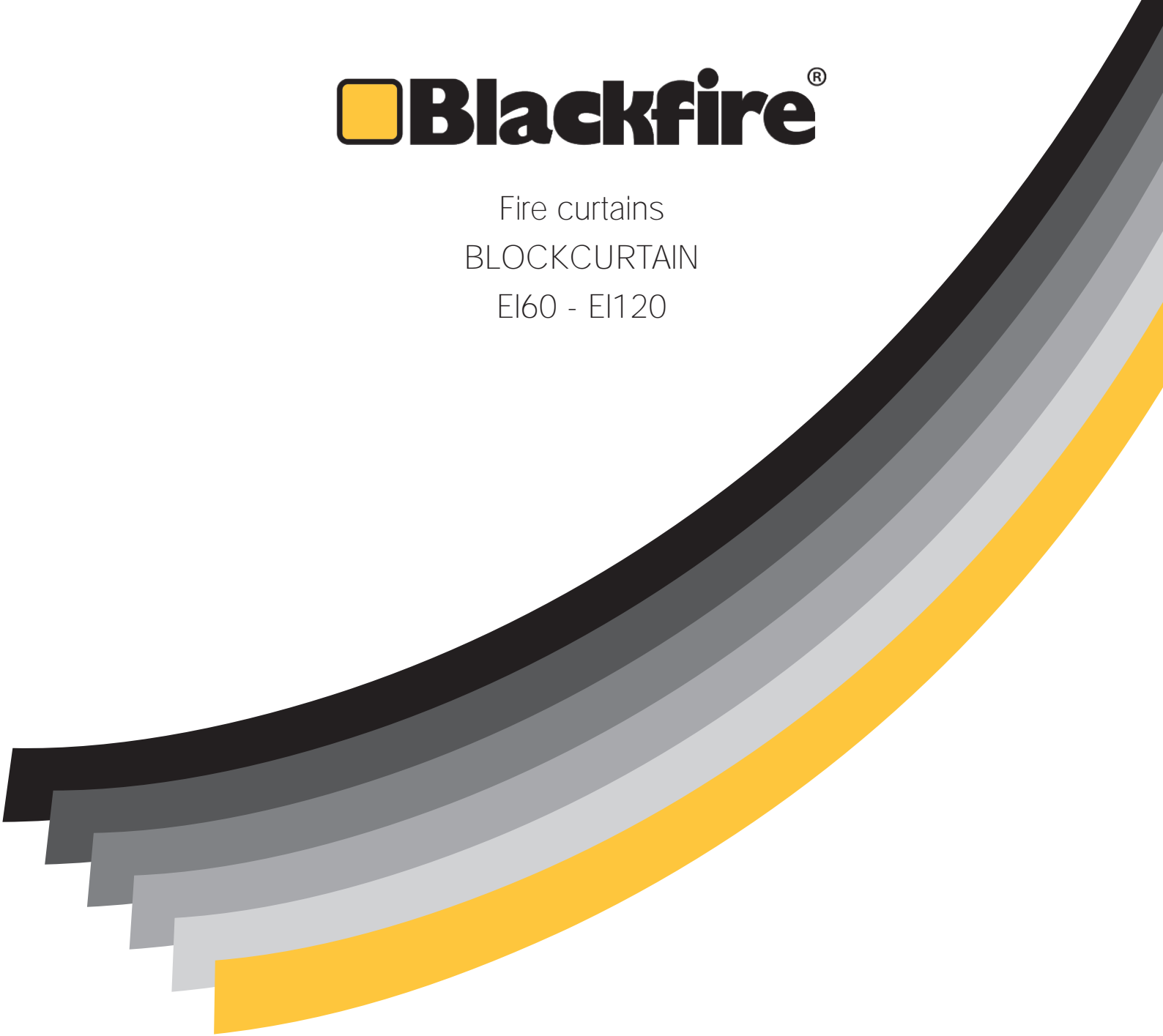




Fire curtains
BLOCKCURTAIN
EI60 - EI120



BLOCKCURTAIN EI60 is tested to withstand fire exposure on one side only and guarantee the system integrity, tested at 1000 °C for 60 minutes (E performance) and thermic insulation for 60 minutes (I performance). The thermic insulation performance on the unexposed side, guarantee a limit average temperature of 140 °C tested for 60 minutes.

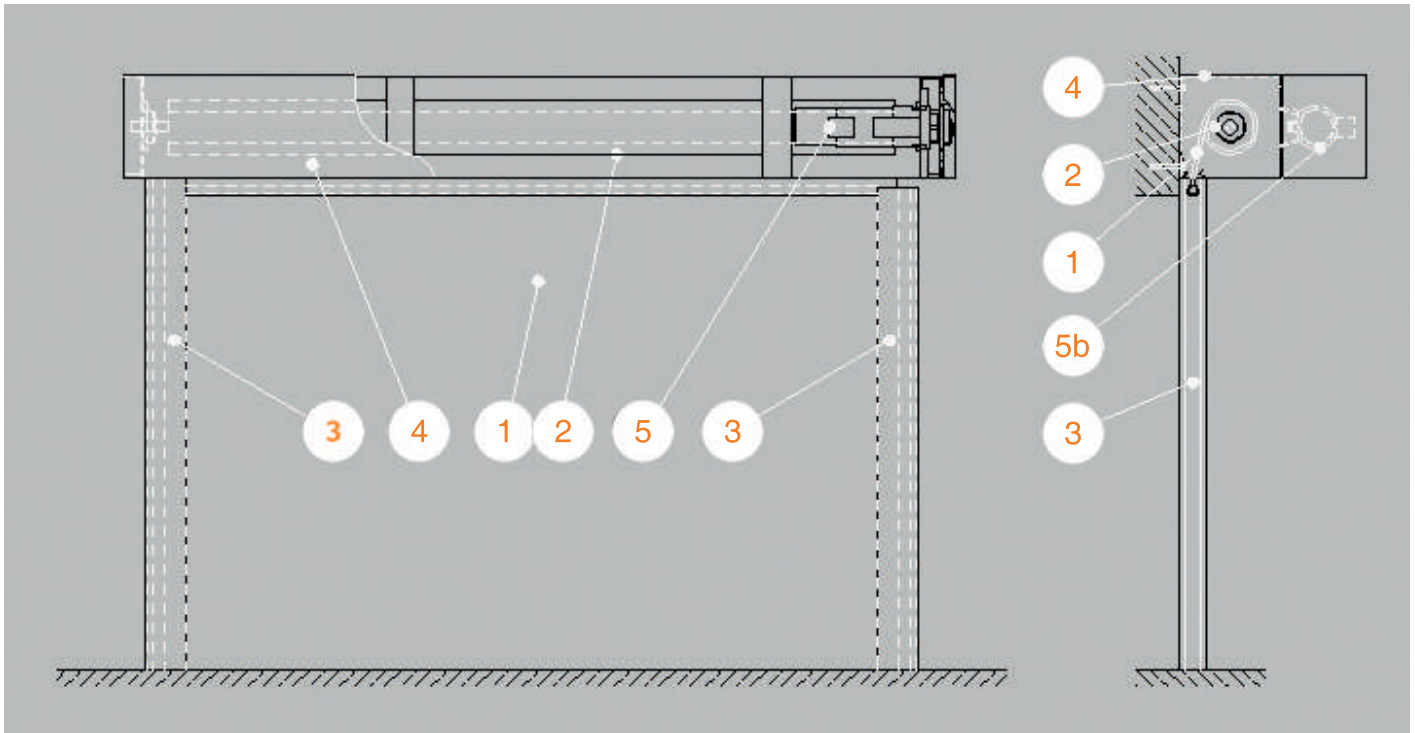
BLOCKCURTAIN EI120 is tested to withstand fire exposure on one side only and guarantee the system integrity, tested at 1000 °C for 120 minutes (E performance) and thermic insulation for 120 minutes (I performance). The thermic insulation performance on the unexposed side, guarantee a limit average temperature of 140 °C tested for 120 minutes.

BLOCKCURTAIN EI60/120 are mobile and partially flexible fire curtains, realized in one module (no overlaps), normally wrapped and supply inside the head box made of galvanized steel, 1.2 mm thick, dimension starting from 250 x 250 mm.

The curtain is composed of multiple layers of fiber glass fabric reinforced with steel cables, covered with polyurethane material and has a weight of 6kg/mq for EI60 and 9kg/mq and a thickness of 9 mm for **EI60** and 18 mm for **EI120**.

A counterweigh is integrated inside the fabric on the bottom of the curtain to help the fabric to be more tensioned and avoid also the fabric curling.





1. Curtain's fabric, 2. Windig shaft, 3. Lateral side guides,
4. Head box, 5. internal drive (tubular), 5b. External drive (lateral if needed)

The fabric sliding is possible through sliders hooked to the fabric. The sliders are housed in special shaped side guides with two different channels, with the total dimensions of 120 x 80/100 mm

In order to protect the side guides, in according with the installation type, two or three sides have one layer (inside the steel casing) of fireproof material that guarantee the thermic insulation.

BLOCKCURTAIN EI60/120 are normally supplied with 230V tubular motor that allow the functioning in Gravity fail safe system.

Thanks to this system, the curtain drop off in fire operation condition in controlled speed, when the fire alarm starts or in case of power failure.

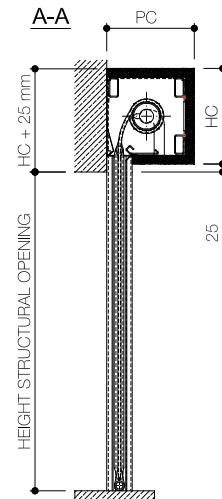
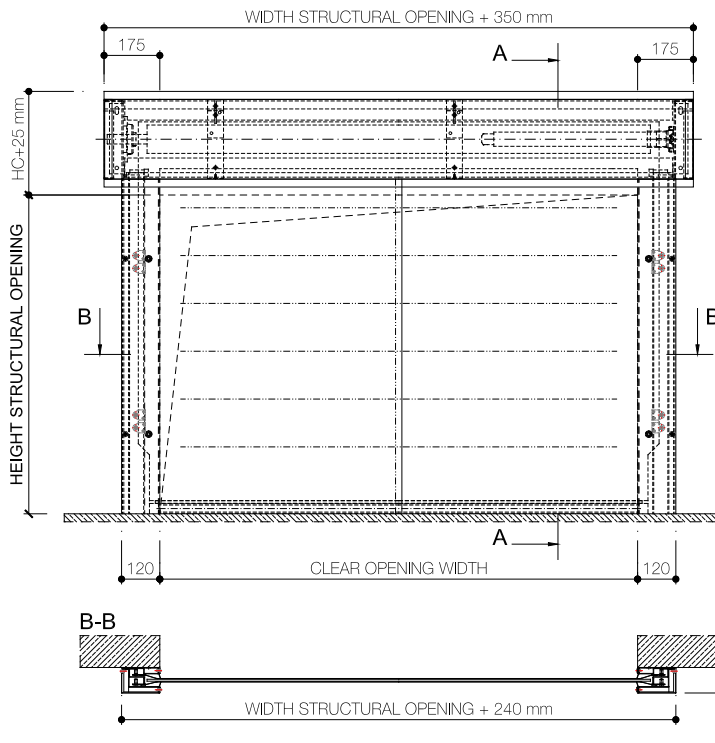
The control panel, always supplied, has a integrated back up battery when a power failure occur.

Front wall and side fixation on aerated concrete wall at least of 600kg/m³ of density for **BLOCKCURTAIN EI60** and 650 kg/m³

BLOCKCURTAIN EI 60/120 are **CE MARKED** in according to: **EN 16034:2014, EN 13241:2016**

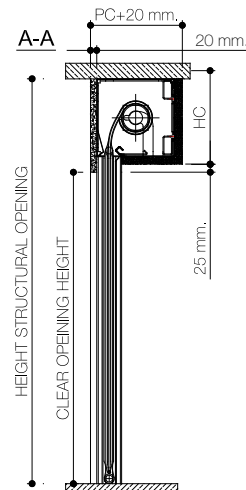
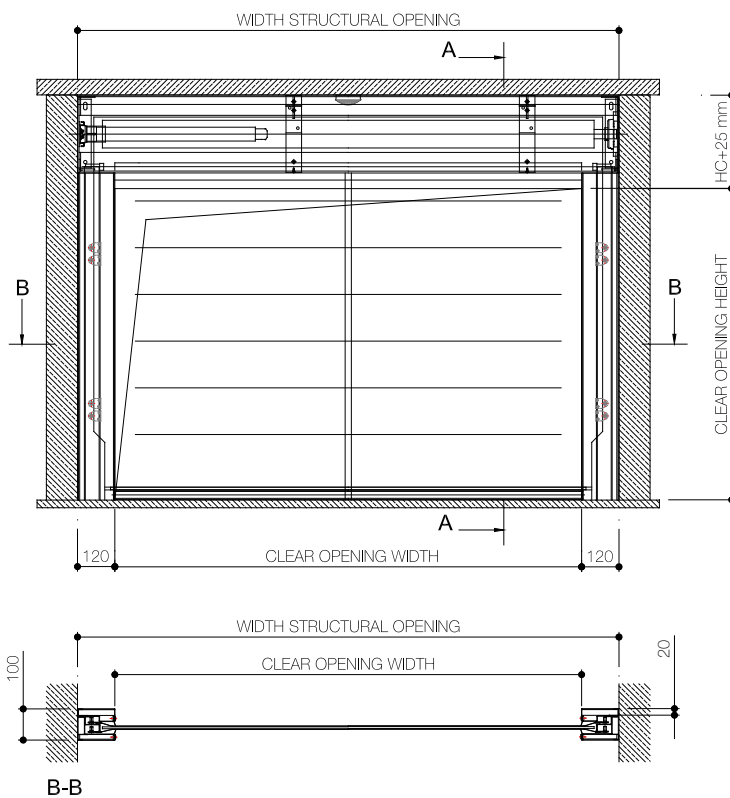
INSTALLATION SCHEME/OVERALL DIMENSIONS

Installation scheme Type 1



- Upper casing, wall fixation (front wall fixation)
- Lateral side guides fixed on the wall (front wall fixation)

Installation scheme Type 2



- Upper casing, lintel fixation. (corridor installation)
- Lateral sliding guides, side fixation. (corridor installation)



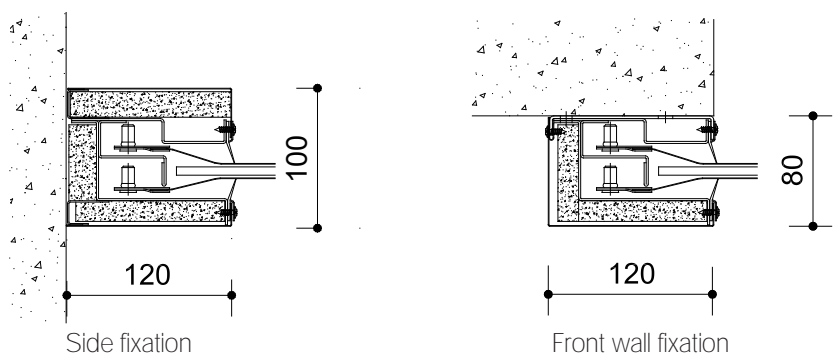
GENERAL CHARACTERISTICS / LATERAL SIDE GUIDES

The fabric sliding is possible through sliders hooked on the fabric. The sliders are housed in special shaped side guides with two different channels, with the total dimensions of 120 x 80/100 mm.

In order to protect the side guides, in according with the installation type, two or three sides have one layer (inside the steel casing) of fireproof material that guarantee the thermic insulation.



upper view



Guide type	Curtains dimensions max W x H. (mm)	Guide dimensions max W. x D (mm)
G100	up to 12.000 x 10.000 (side fixation)	120 x 100
G80	up to 12.000 x 10.000 (front wall fixation)	120 x 80

Important: lateral side guides are mandatory

HEAD BOX AND GRAVITY FAIL SAFE DRIVES, OVERALL DIMENSIONS CHARTS

CLEAR HEIGHT DIMENSION (in mm.)	10000	1	1	2	2	3	3	4	5	5	5	6	6	6	6	6	6	-	-	-	-	-	-	-
	9750	1	1	2	2	3	3	4	5	5	5	6	6	6	6	6	6	-	-	-	-	-	-	-
	9500	1	1	2	2	3	3	4	5	5	5	6	6	6	6	6	6	-	-	-	-	-	-	-
	9250	1	1	2	2	3	3	4	5	5	5	6	6	6	6	6	6	-	-	-	-	-	-	-
	9000	1	1	2	2	3	3	3	5	5	5	6	6	6	6	6	6	-	-	-	-	-	-	-
	8750	1	1	2	2	3	3	3	5	5	5	6	6	6	6	6	6	-	-	-	-	-	-	-
	8500	1	1	2	2	3	3	3	5	5	5	6	6	6	6	6	6	6	-	-	-	-	-	-
	8250	1	1	2	2	3	3	3	4	5	5	6	6	6	6	6	6	6	-	-	-	-	-	-
	8000	1	1	2	2	2	3	3	4	5	5	6	6	6	6	6	6	6	-	-	-	-	-	-
	7750	1	1	2	2	2	3	3	3	5	5	6	6	6	6	6	6	6	-	-	-	-	-	-
	7500	1	1	2	2	2	3	3	3	5	5	6	6	6	6	6	6	6	6	-	-	-	-	-
	7250	1	1	1	2	2	3	3	3	5	5	5	6	6	6	6	6	6	6	6	-	-	-	-
	7000	1	1	1	2	2	3	3	3	5	5	5	6	6	6	6	6	6	6	6	6	-	-	-
	6750	1	1	1	2	2	3	3	3	4	5	5	6	6	6	6	6	6	6	6	6	6	-	-
	6500	1	1	1	2	2	3	3	3	4	5	5	5	6	6	6	6	6	6	6	6	6	6	-
	6250	1	1	1	2	2	3	3	3	4	5	5	5	6	6	6	6	6	6	6	6	6	6	6
	6000	1	1	1	2	2	3	3	3	4	4	5	5	5	6	6	6	6	6	6	6	6	6	6
	5750	1	1	1	2	2	3	3	3	3	4	5	5	5	6	6	6	6	6	6	6	6	6	6
	5500	1	1	1	1	2	2	3	3	3	4	4	5	5	5	6	6	6	6	6	6	6	6	6
	5250	1	1	1	1	2	2	3	3	3	4	4	5	5	5	6	6	6	6	6	6	6	6	6
	5000	1	1	1	1	2	2	3	3	3	4	4	5	5	5	5	6	6	6	6	6	6	6	6
	4750	1	1	1	1	2	2	2	3	3	4	4	4	5	5	5	6	6	6	6	6	6	6	6
	4500	1	1	1	1	1	2	2	3	3	3	4	4	5	5	5	5	6	6	6	6	6	6	6
	4250	1	1	1	1	1	2	2	3	3	3	4	4	5	5	5	5	5	6	6	6	6	6	6
	4000	1	1	1	1	1	2	2	2	3	3	3	4	5	5	5	5	5	6	6	6	6	6	6
	3750	1	1	1	1	1	2	2	2	3	3	3	4	5	5	5	5	5	5	6	6	6	6	6
3500	1	1	1	1	1	1	2	2	2	3	3	3	4	5	5	5	5	5	5	6	6	6	6	
3250	1	1	1	1	1	1	2	2	2	3	3	3	4	4	5	5	5	5	5	6	6	6	6	
3000	1	1	1	1	1	1	1	2	2	2	3	3	3	4	5	5	5	5	5	6	6	6	6	
2750	1	1	1	1	1	1	1	2	2	2	3	3	3	4	5	5	5	5	5	6	6	6	6	
2500	1	1	1	1	1	1	1	2	2	2	2	3	3	3	5	5	5	5	5	6	6	6	6	
2250	1	1	1	1	1	1	1	2	2	2	2	3	3	3	5	5	5	5	5	6	6	6	6	
2000	1	1	1	1	1	1	1	2	2	2	2	3	3	3	5	5	5	5	5	6	6	6	6	
1750	1	1	1	1	1	1	1	2	2	2	2	3	3	3	5	5	5	5	5	6	6	6	6	
1500	1	1	1	1	1	1	1	2	2	2	2	2	3	3	3	5	5	5	5	5	6	6	6	
1250	1	1	1	1	1	1	1	2	2	2	2	2	3	3	3	4	5	5	5	5	5	5	5	
1000	1	1	1	1	1	1	1	2	2	2	2	2	2	3	3	4	4	5	5	5	5	5	5	
		1000	1500	2000	2500	3000	3500	4000	4500	5000	5500	6000	6500	7000	7500	8000	8500	9000	9500	10000	10500	11000	11500	12000
CLEAR WIDTH DIMENSION (in mm.)																								

Rev. 03/2020









Head box dimensions PC x HC (in mm)		250 x 250
		300 x 300
		350 x 350
		400 x 400
		450 x 450
		500 x 500
		550 x 550

Gravity Fail Safe functioning drives	Internal functioning (tubular drives)	
	1	VIC-0122 [230V AC, 1.2A, 265W]
	2	VIC-0123 [230V AC, 1.9A, 435W]
	3	VIC-0124 [230V AC, 1.9A, 435W]
	External drive	
	4	VIC-0242 [3x400V AC, 2A, 450W]
5	VIC-0243 [3x400V AC, 2.7A, 900W]	
6	VIC-0244 [3x400V AC, 4.1A, 1100W]	

HEAD BOX AND GRAVITY FAIL SAFE DRIVES OVERALL DIMENSIONS CHARTS

CLEAR HEIGHT DIMENSION (in mm.)	10000	2	2	2	3	4	4	4	4	5	6	6	6	6	-	-	-	-	-	-	-	-	-	-
	9750	1	2	2	3	4	4	4	4	5	6	6	6	6	-	-	-	-	-	-	-	-	-	-
	9500	1	2	2	3	4	4	4	4	5	6	6	6	6	-	-	-	-	-	-	-	-	-	-
	9250	1	2	2	3	4	4	4	4	5	6	6	6	6	6	-	-	-	-	-	-	-	-	-
	9000	1	2	2	3	4	4	4	4	5	5	6	6	6	6	-	-	-	-	-	-	-	-	-
	8750	1	2	2	3	4	4	4	4	5	5	6	6	6	6	-	-	-	-	-	-	-	-	-
	8500	1	2	2	3	4	4	4	4	5	5	6	6	6	6	6	-	-	-	-	-	-	-	-
	8250	1	2	2	2	4	4	4	4	5	5	6	6	6	6	6	-	-	-	-	-	-	-	-
	8000	1	2	2	2	3	4	4	4	5	5	6	6	6	6	6	6	-	-	-	-	-	-	-
	7750	1	2	2	2	3	4	4	4	5	5	6	6	6	6	6	6	-	-	-	-	-	-	-
	7500	1	2	2	2	3	4	4	4	5	5	6	6	6	6	6	6	6	-	-	-	-	-	-
	7250	1	2	2	2	3	4	4	4	5	5	6	6	6	6	6	6	6	-	-	-	-	-	-
	7000	1	2	2	2	3	4	4	4	5	5	6	6	6	6	6	6	6	-	-	-	-	-	-
	6750	1	2	2	2	2	3	4	4	5	5	6	6	6	6	6	6	6	-	-	-	-	-	-
	6500	1	1	2	2	2	3	4	4	5	5	5	6	6	6	6	6	6	-	-	-	-	-	-
	6250	1	1	2	2	2	3	4	4	5	5	5	6	6	6	6	6	6	-	-	-	-	-	-
	6000	1	1	2	2	2	3	4	4	5	5	5	6	6	6	6	6	6	6	-	-	-	-	-
	5750	1	1	2	2	2	3	3	4	4	5	5	6	6	6	6	6	6	6	-	-	-	-	-
	5500	1	1	2	2	2	3	3	4	4	5	5	6	6	6	6	6	6	6	-	-	-	-	-
	5250	1	1	2	2	2	3	3	4	4	5	5	6	6	6	6	6	6	6	-	-	-	-	-
	5000	1	1	2	2	2	3	3	3	4	5	5	6	6	6	6	6	6	6	-	-	-	-	-
	4750	1	1	2	2	2	2	3	3	4	5	5	5	6	6	6	6	6	6	-	-	-	-	-
	4500	1	1	1	2	2	2	3	3	4	5	5	5	6	6	6	6	6	6	-	-	-	-	-
	4250	1	1	1	2	2	2	3	3	3	5	5	5	6	6	6	6	6	6	6	-	-	-	-
4000	1	1	1	2	2	2	3	3	3	4	5	5	6	6	6	6	6	6	6	6	-	-	-	
3750	1	1	1	2	2	2	3	3	3	3	5	5	6	6	6	6	6	6	6	6	6	-	-	
3500	1	1	1	1	2	2	3	3	3	3	5	5	5	6	6	6	6	6	6	6	6	6	-	
3250	1	1	1	1	2	2	3	3	3	3	4	5	5	5	6	6	6	6	6	6	6	6	6	
3000	1	1	1	1	2	2	2	3	3	3	4	4	5	5	5	6	6	6	6	6	6	6	6	
2750	1	1	1	1	1	2	2	3	3	3	3	4	5	5	5	5	6	6	6	6	6	6	6	
2500	1	1	1	1	1	2	2	2	3	3	3	4	4	5	5	5	5	6	6	6	6	6	6	
2250	1	1	1	1	1	1	2	2	3	3	3	4	4	4	5	5	5	5	5	6	6	6	6	
2000	1	1	1	1	1	1	2	2	2	3	3	3	4	4	5	5	5	5	5	6	6	6	6	
1750	1	1	1	1	1	1	1	2	2	2	3	3	3	4	5	5	5	5	5	6	6	6	6	
1500	1	1	1	1	1	1	1	2	2	2	2	3	3	3	4	5	5	5	5	6	6	6	6	
1250	1	1	1	1	1	1	1	2	2	2	2	2	3	3	4	5	5	5	5	6	6	6	6	
1000	1	1	1	1	1	1	1	2	2	2	2	2	3	3	4	5	5	5	5	6	6	6	6	
		1000	1500	2000	2500	3000	3500	4000	4500	5000	5500	6000	6500	7000	7500	8000	8500	9000	9500	10000	10500	11000	11500	12000
	CLEAR WIDTH DIMENSION (in mm.)																							

Rev. 03/2020

Head box dimension PC x HC (in mm)		325 x 350
		375 x 400
		425 x 450
		475 x 500
		525 x 550
		575 x 600
		625 x 650
	675 x 700	

Gravity Fail Safe functioning drives	Internal functioning (tubular drives)	
	1	VIC-0122 [230V AC, 1.2A, 265W]
	2	VIC-0123 [230V AC, 1.9A, 435W]
	3	VIC-0124 [230V AC, 1.9A, 435W]
	External drive	
	4	VIC-0242 [3x400V AC, 2A, 450W]
5	VIC-0243 [3x400V AC, 2.7A, 900W]	
6	VIC-0244 [3x400V AC, 4.1A, 1100W]	