



FIRE ROLLING SHUTTERS
BLOCKSHUTTER EW120



BLOCKSHUTTER EW120

BLOCKSHUTTER EW120 is a fire resisting roller shutter designed and tested on both sides to guarantee an integrity up to 1000 °C for 120 minutes (E performance) and to keep the thermal radiation below 15 kW/sqm (W performance), in order to protect people and goods in the proximity from heat radiation generated by fire.

The mantle is composed of double-sheet galvanized steel slats, with insulation, height 114 mm, thickness 22 mm and weight of 30 kg/sqm.

The slats are securely hooked together and fastened on the side with steel end locks in order to prevent slipping of the slats and to guarantee the uniform mantle descent.



1. Electric drive
» see characteristics pag.18
2. Main winding shaft
» see characteristics pag.17
3. Drive support bracket
4. Pression shaft
5. Lateral side guides (standard)
» see characteristics pag.17
6. Door made with steel elements filled with insulated fireproof material.
» see characteristics pag.16
7. Control panel
» see characteristics pag.18
8. Safety break system
9. Support brackets



BLOCKSHUTTER EW120 is normally supplied with mono-phase 230V or three-phase 400V wheel chain motor with Gravity Fail Safe system.

This particular system allows the descent of the shutter by gravity, without the need for electrical current. The activation occurs in a totally automatic way when the solenoid of the motor receives the fire alarm signal at 24Vdc (500mA) and releases the motor brake allowing the descent with a mechanical controlled speed.

It is mandatory, for the Gravity fail safe system, to install an audio-visual warning device in accordance with standard EN 12604, that must intervene throughout the descent in Gravity Fail Safe mode of the shutter. The warning device is supplied as standard and must be connected to the alarm system that provides a continuous signal 24V (500Ma) for a duration of at least 60 seconds. The motor is equipped with a push-button panel with up / down / stop commands.

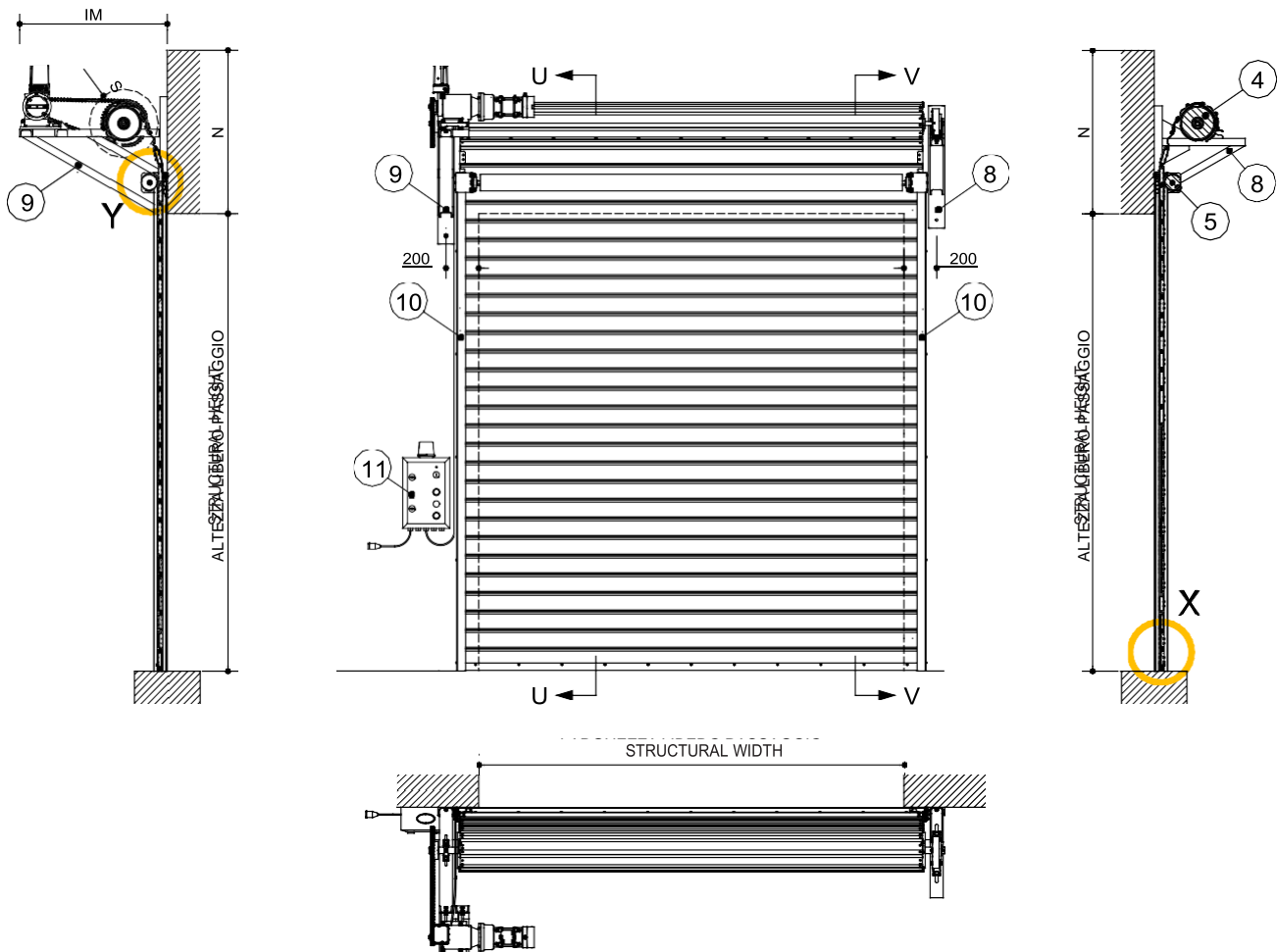
A built-in keyboard with up/down/stop inputs is provided.

It is the customer's responsibility to correctly size the support structures according to the weight of the shutter to be installed.

On request: automatic operation, head box and Ral coating.

BLOCKSHUTTER EW120 is certified **WIND LOAD** resistance **CLASS 2** according to **EN 13241-1** and **CE MARKED** according to **EN 16034:2014, EN 13241:2016**

Installation scheme Type 1



Components:

- 04. Shaft
- 05. Steel winding shaft
- 08. Steel support bracket safety brake system side
- 09. Three phase motor and transmission system support bracket
- 10. Lateral steel side guides filled with fire retardant insulated material and a layer of thermoexpanding gasket along the full height
- 11. Control panel with acoustic/visual signal set, preset to be connected to the general fire/smoke alarm system

Installation scheme Type 1

Support brackets for motor and safety brake system fixed on the wall (front fixation)

Lateral side guides fixed on the wall (front fixation)

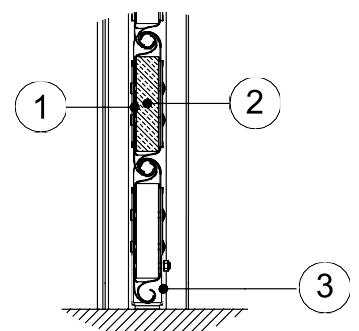
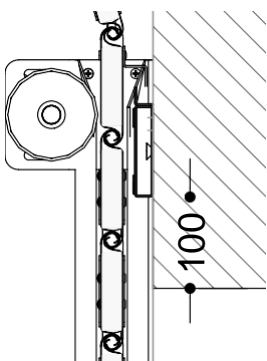
Construction details

Detail Y

6. Labyrinth shaped profile in galvanized steel with thermo expanding sealing gasket along the total width.

Detail X

- 1. Galvanized steel element
- 2. Insulated fireproof material
- 3. "U" profile made of steel with thermo expanding sealing gasket

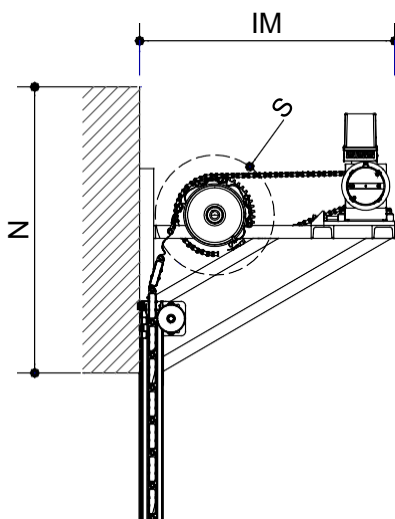


DIMENSIONS

The support system consists of two sturdy steel brackets to which is inserted the winding shaft on which the rolling shutter is wrapped. A pression tube is positioned on the internal side, in the external side instead there is a tubular with thermo expanding gaskets to seal and contain the flames.

The frontal protection is completed with a labyrinth system that joints the frontal tubular to the mantle.

Dimension range diagram **BLOCKSHUTTER EW120**



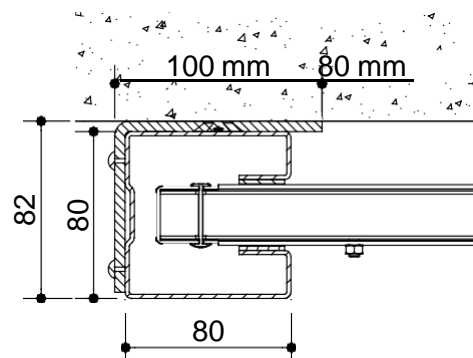
Clear height (mm)	N (mm)	S (mm)	IM (mm)
2000	800	460	950
2500	850	500	950
3000	850	500	950
3500	900	570	1000
4000	900	570	1000
4500	900	570	1000
5000	950	600	1100
5500	1000	660	1100
6000	1000	660	1100
6500	1000	660	1100
7000	1000	660	1100
7500	1050	750	1200
8000	1050	750	1200

SIDE GUIDES

Lateral side guides are made of galvanized steel and are composed of two parts, the first is a sturdy bead to be fixed to the masonry, the second is a C shaped profile where the rolling shutter mantle slides. The side guides dimensions are 80 x 80 mm (over 8.00 meters of clear width, the depth of the guides increases by 20mm); the angular of the guide must be fixed from the width edge of the masonry at a distance of 80 mm.



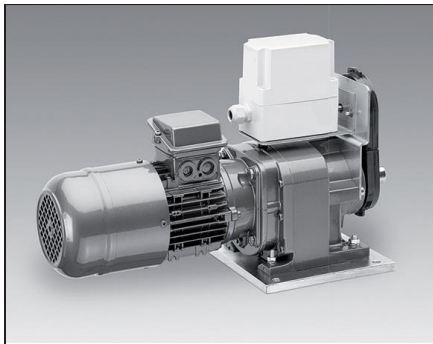
upper view



Front wall installation of side guide (valid dimensions up to L. 8.000 mm)

Guide type	Curtains dimensions max W. x H. (mm)	Guide dimensions max W. x D (mm)
GW80	up to 12.000 x 9.000 (front wall fixation)	100 x 80

Important: lateral side guides are mandatory



FIRE-PROOF CHAIN DRIVERS FOR FIRE DOORS

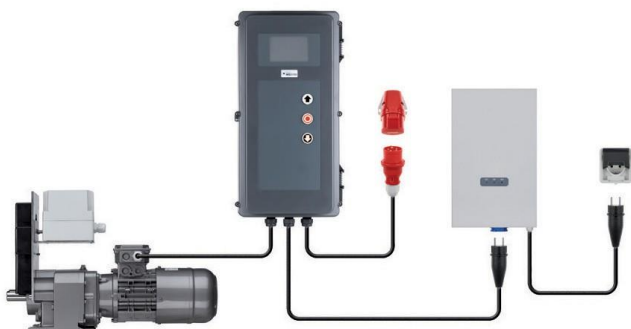
		MODEL					
		05 - 25-20	3-50-20	4-70-20	5-105-20	6-140-20	7-220-20
Drive torque	Nm	250	500	700	1050	1400	2200
Drive motor speed	min -1	20	20	20	20	20	20
Motor output	kW	0,55	1,1	1,5	2,2	3,0	4,0
Operating voltage	V	230/400/3 ~	230/400/3 ~	230/400/3 ~	230/400/3 ~	230/400/3 ~	230/400/3 ~
Mains frequency	Hz	50	50	50	50	50	50
Control voltage	V	24	24	24	24	24	24
Motor current rating	A	2,8/1,6	5,4/3,1	6,6/3,8	9,2/5,3	12,5/7,2	16,1/9,3
Max. cycles per hour *		30	30	30	30	30	30
Fuse protection, on site	A	10	10	10	10	16/10	20/10
IP protection class		54	54	54	54	54	54
Temperature range **	°C	-20/+60	-20/+60	-20/+60	-20/+60	-20/+60	-20/+60
Continuous sound pressure level	db (A)	<70	<70	<70	<70	<70	<70
Unit weight	kg	40	59	68	94	129	162
Maximum output revolutions		48	48	48	48	48	48

* One cycle corresponds to two door movements (opening and closing).

The specified values refer to 10 revolutions of the drive shaft per movement and presume an even distribution.

** Temperature range < -20°C: oil grade and electric heating on request.

CONTROL PANEL



Operation

3-button input unit LCD monitor with clear text display
 3-button navigation / status and diagnostic messages Integrated error memory (readout of all error messages including frequency and cycle of last occurrence)

Command Center CS310	Operating voltage	V	230 / 400 / 3 ~
	Mains frequency	Hz	50
	Control voltage	V	24
	Max. load	kW (A)	2,2 (8,0)
	Protection class		IP 65
	Temperature range	°C	-10/+40
	Dimensions, W x H x D	mm	245x455x190
UPS	Unit weight	kg	1,8
	Input voltage	V	230 / 1 ~
	Output voltage	V	230 / 1 ~
	Frequency	Hz	50
	Output	VA	500
	IP protection class		40
	Temperature range	°C	0 / +40
Dimensions, W x H x D	mm	235x390x110	
Unit weight	kg	11	