

 **Blackfire**<sup>®</sup>

---

**UNIKA**

---

Fire  
curtain



**PATENTED**



# A family history



**Blackfire**<sup>®</sup>



Our company was founded in 1977 under the name Conegliano Serramenti, as the wish of Antonio Marcon who, at the age of 39 decided to start and build gates and shutters.

In a short time we became one of the first manufacturers in Italy supplying major Italian retailers.

In 2016, with the increasing range of civil and industrial closures, we changed our company name to Conegliano Group srl.

With the same innovative spirit we approached the world of fire, thus the BLACKFIRE brand was born and with it we propose, as the first manufacturers in Italy, rolling shutter BLOCKSHUTTER and fire curtain BLOCKCURTAIN fire and smoke curtains.

Temperatures and endurance times chase each other in each trial. Each test is different from the previous one and the effort is a lot but, the idea of protecting people and environments involves us strongly and stimulates us to continue studying and investing.

We would like to thank all our Clients, current and future, who commit us to constant preparation on the relevant regulations, we are in fact able to offer our advice in choosing the most suitable product.

A due recognition goes to our Employees, Collaborators, Suppliers and our Agents, each of them is a fundamental piece of our Blackfire project.

Thank you all, Sandra Marcon

# Customer first





## Research and development

We specialize in designing closures systems for the most complex application such as shopping malls, industrial and civil settlements.

To date, we are one of the few companies to design and manufacture increasingly specific industrial closures.



## Consulting

We have an extensive network of specialists and consultants to provide complete assistance from design to final testing. Thanks to our specialized staff we are able to understand the real needs of the customer.



## Customer service

We not only rely on product quality, but also guarantee effective and timely after-sales service- this is the constant commitment of our staff.



## Certification

All our products comply with EU regulations and are CE marked, fireproof products in particular, comply with EN 16034 thus attesting to the suitability of the tests performed at the authorized certified laboratory.

Even today, the production boasts an optimal quality of execution, thanks to highly specialized staff, capable of pandering to the work requirements that have evolved year after year, moving from purely manual processing to robotic finishing.

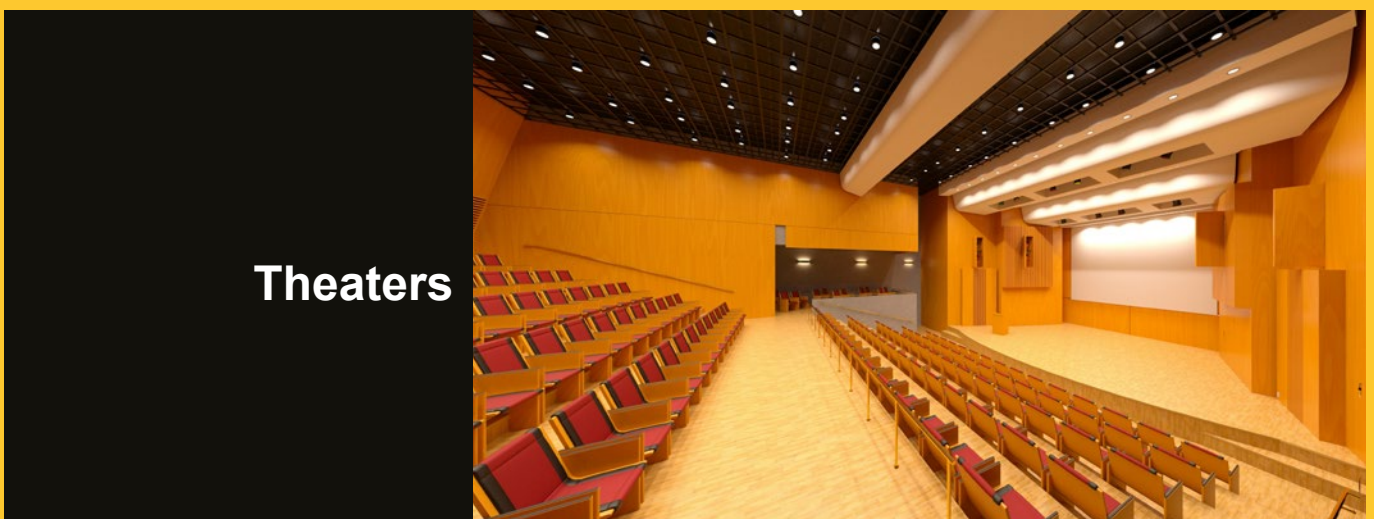
# Applications

Fire risk today represents one of the most dangerous events that can affect a large number of people.

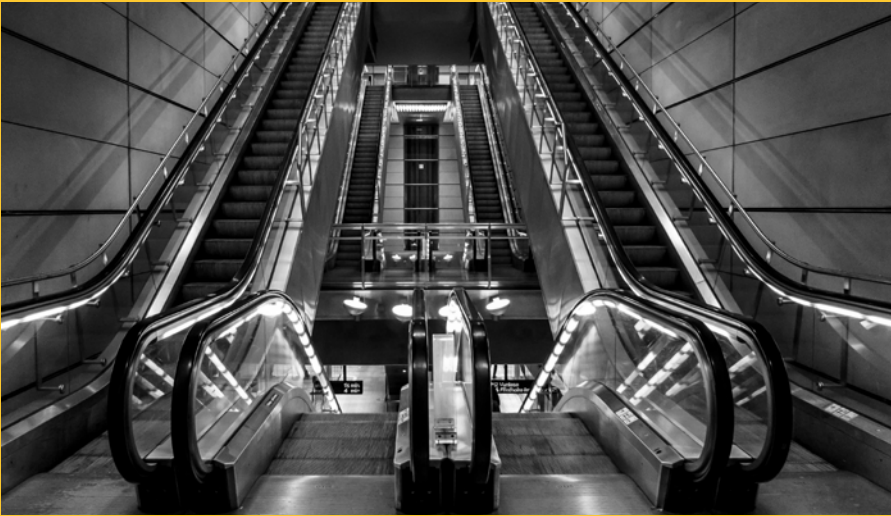
**BLOCKCURTAIN UNIKA** protects against fire by inserting itself as a protection system in various environments, both civil and industrial.



Shopping  
malls



Theaters



**Subways**



**Airports**



**Industrial  
and civil  
structures**

# Fire curtain **UNIKA**



## Exclusive advantages

1. Manual emergency maneuvering
2. Dead man control unit built into the motor
3. Does not require back-up battery
4. Tested on normalized flexible structure
5. Manufactured in ITALY



# Specification: EI60, EI120

UNIKA EI 60, EI 120 model fire curtain has been tested to ensure integrity at 1000 °C (grade E) and a seal to thermal insulation (grade I). The tightness of the thermal insulation of the side opposite to fire, guarantees a maximum average temperature of 140 °C.

It consists of a fabric assembled with multiple layers of fiberglass fabric reinforced by steel cables and intumescent fibers. Inside the fabric, to allow proper vertical tension and also to prevent the fabric from curling, the counterweight is integrated into the bottom and is invisible from the outside.

The gliding of the curtain is possible by hooks hanged to the fabric, that slide on side guides with a special shape which allows them to be housed in two separate sections.

UNIKA EI 60, EI 120 fire curtain is supplied with a 230 V motor, does not require back up batteries, has built-in control logic that eliminates the major disadvantage of installing an external control unit, but most importantly has manual emergency chain maneuvering that allows the movement of the fabric in case of power failure or in case of motor malfunction.

The motor operates in Gravity fail safe, thanks to this system, the curtain descends to the closed position at a controlled speed, following the initiation of the alarm signal or in case of power failure.

Another great advantage of our curtain UNIKA is that it can be fixed on masonry or alternatively on normalized flexible structure.

The test performed in the laboratory, successfully passed with 100×100×3 mm tubular structure and two 15 mm thick Knauf GKF sheets for protection.

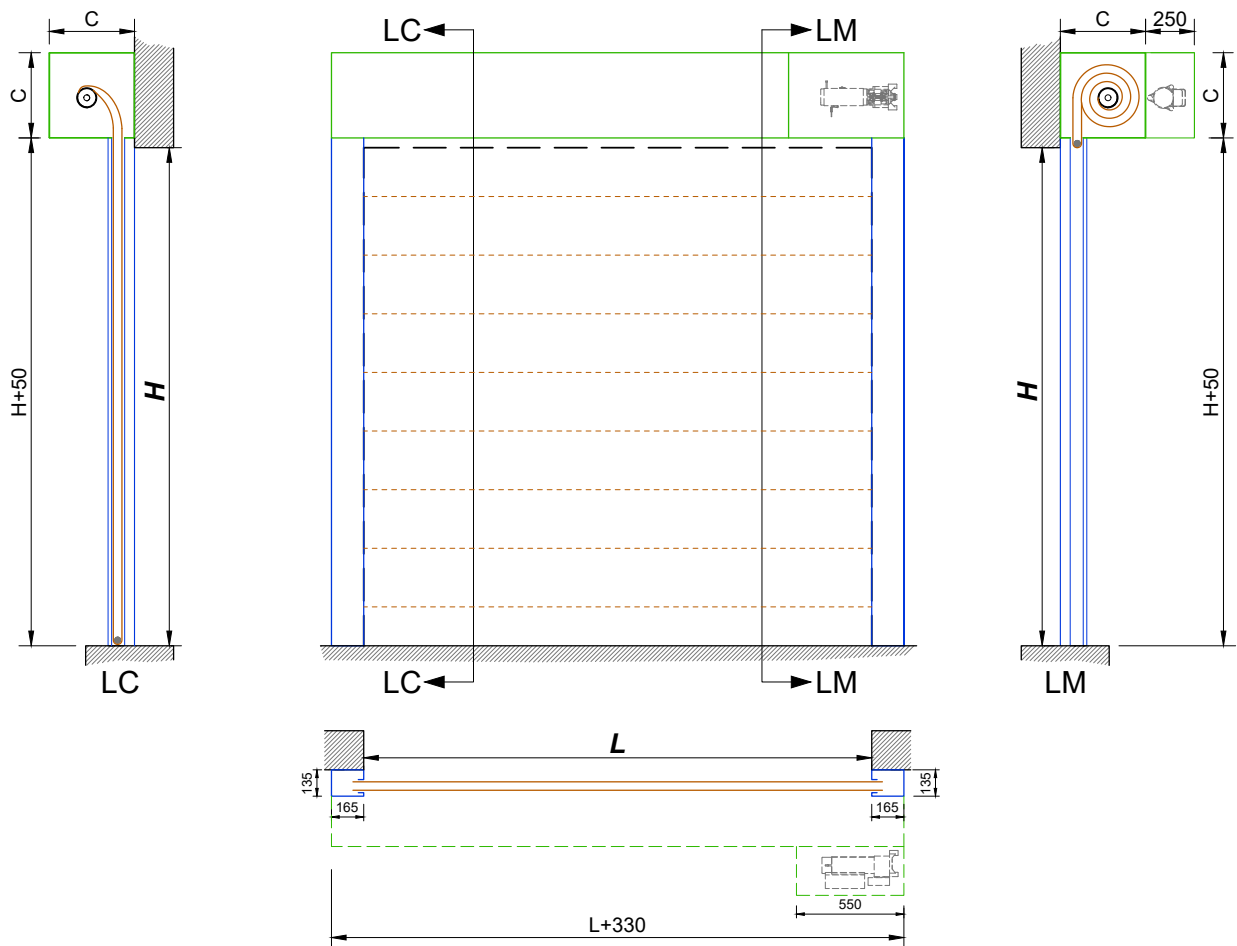
Metal parts such as guides and head box are supplied galvanized, they can be powder coated in RAL color (on request).

**UNIKA EI 60, EI 120  
is entirely manufactured  
in Italy!**



# Installation scheme

# UNIKA



## Legend

**LC:** Bearing-side view

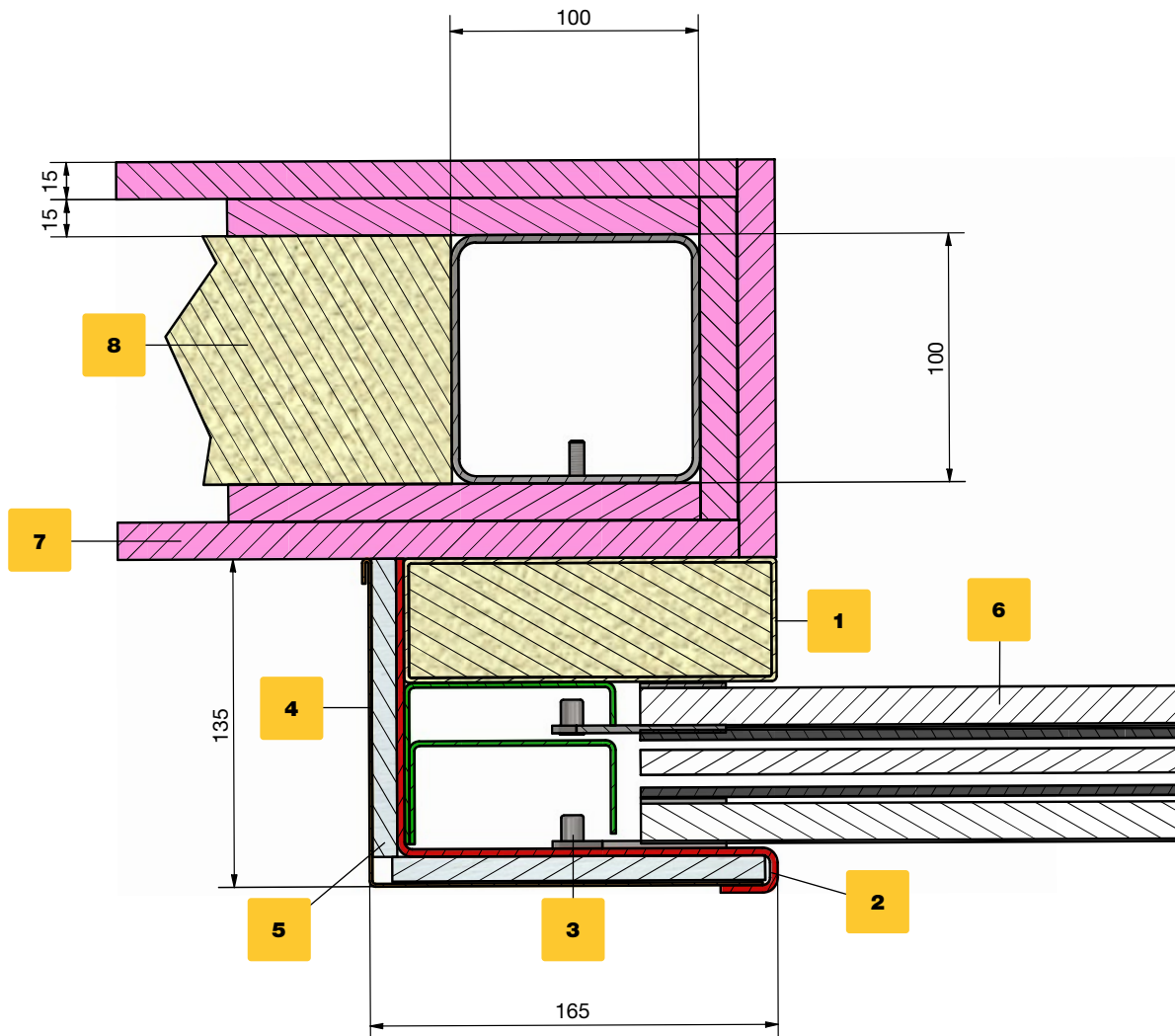
**LM:** Motor side view

**H:** From the light hole height  $H$ , add 50 mm for headbox dimensions

**C:** Dimensions in mm of head box, excluding motor dimensions (550×250)

- Side guides
- Headbox
- Curtain fabric

# Sliding guide **UNIKA**



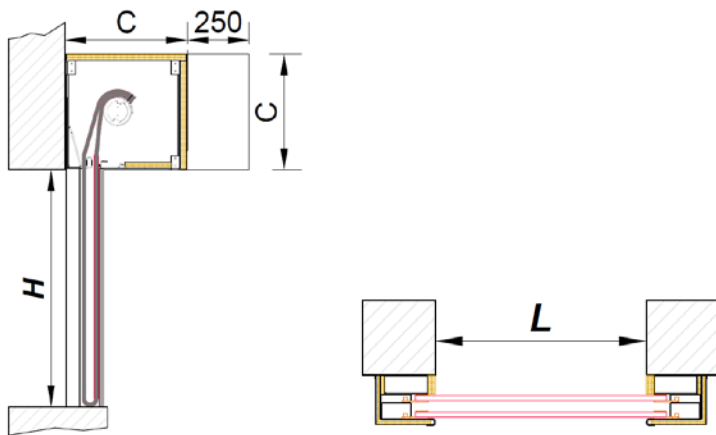
## Partis list

Item	Description
1	Tubular 150x50
2	Guide
3	Tear proof hooks
4	Guide cover
5	Guide insulation
6	Curtain fabric
7	Knauf GKF15 Slab
8	Rock wool

UNIKA curtain was tested at the certified laboratory with normalized flexible structure as in the drawing. The choice of normalized support construction should reflect the usual intended use of the door. The rules for the supporting construction are indicated on EN 1363-1.

UNIKA fire curtain can also be installed on high- and low-density walling.

# Headbox UNIKA



## Finishing

Head box and guides are galvanized finishing in the standard version, on request they can also be supplied pre-painted similar to RAL 9002.

As an option, wide availability of RAL colors of your choice, in power coating for exteriors.

HEAD BOX DIMENSIONS

		Width											
		1000	1500	2000	2500	3000	3500	4000	4500	5000	5500	6000	6500
Height	1000	350	350	350	350	350	350	380	380	400	400	420	420
	1500	380	380	380	380	380	380	400	400	400	420	420	420
	2000	400	400	400	400	400	400	420	420	420	450	450	450
	2500	420	420	420	420	420	420	450	480	480	480	480	500
	3000	450	450	450	450	450	480	480	480	480	500	500	500
	3500	450	450	450	450	480	480	480	500	500	500	520	520
	4000	480	480	480	500	500	500	520	520	520	550	550	550
	4500	500	500	500	520	520	520	520	550	550	550	580	580
	5000	520	520	520	550	550	550	580	580	580	580	600	600
	5500	550	550	550	550	580	580	580	580	600	600	630	630
	6000	580	580	580	600	600	600	630	630	630	650	650	650
	6500	600	600	600	600	630	630	630	630	650	650	650	650

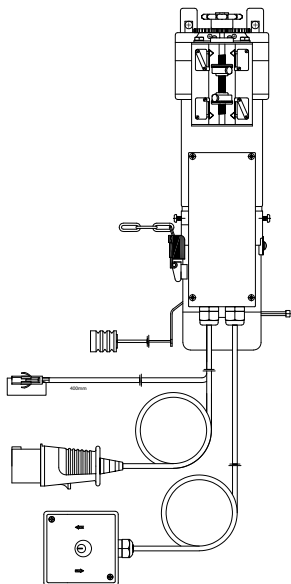
Dimensions in millimeters

## Motors

- Motor Model JM 150
- Motor Model JM 500
- Motor Model JM 750

# Motor **UNIKA**

## Handling devices and control unit



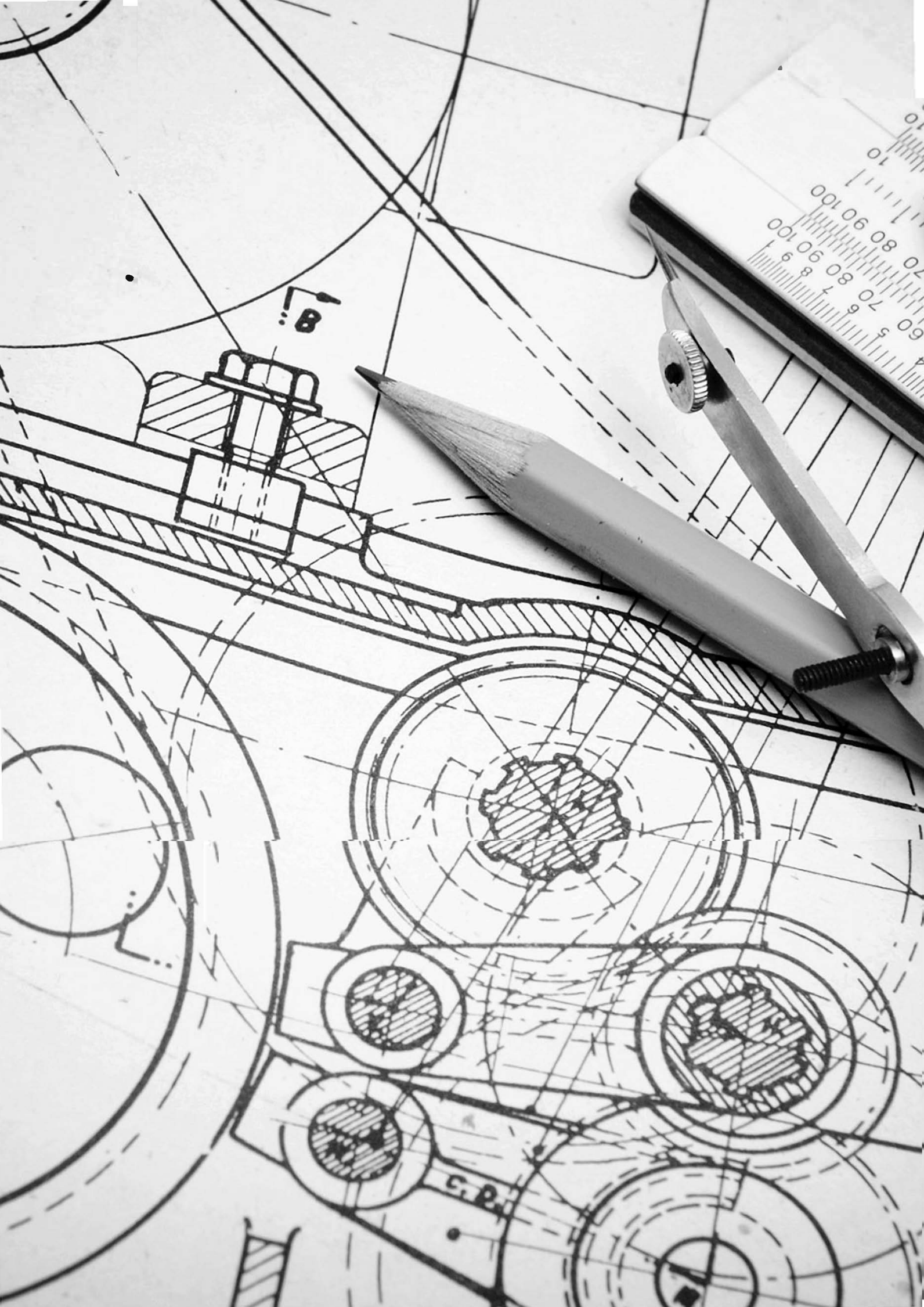
SINGLE PHASE MOTOR MODELL JM				
	JM150	JM500	JM500 (BP8)	JM750
<b>Volt</b>	230 V / 1 Ph / 50 Hz			
<b>Watts</b>	90	370	370	370
<b>AMPS</b>	1.8	3.5	3.5	3.5
<b>Gearabox output speed</b>	34	34	34	22
<b>Drive torque Nm</b>	20	62	62	95
<b>Standard sproket on unit</b>	Pitch 11T 3/8	Pitch 9T 5/8	Pitch 9T 5/8	Pitch 10T 5/8
<b>Maximum lifting height (m)</b>	4	5.5	4.5	7
<b>Lifting capacity kg</b>	170	500	600	750
<b>RPM</b>	6.2	6.2	5.1	3.4
<b>Torque Nm</b>	112	343	413	607



CONTROL UNIT (FDCP03) - OPTIONAL	
<b>Power supply</b>	230 V - 50 Hz
<b>Operating temperature</b>	Between 15 and + 70 °C
<b>Relay</b>	10 A a 28 V CC/230 V CA
<b>Switching control</b>	Low voltage
<b>Flashing light</b>	LED - white
<b>Siren</b>	12 V CC 85 mA, 103 dB (decibel)
<b>Batteries</b>	2 x 12 V, 1.2 Ah lead acid
<b>Auxiliary power</b> (only during activation - not constant)	2,5 A a 12 V CC 2,5 A a 24 V CC
<b>Dimensions (mm)</b>	255x240x118
<b>Weight</b>	2 kg
<b>Fuse Dimensions (mm)</b>	20x5

## General applications:

- The FCP03 is designed to operate rolling doors equipped with motors with magnetic electromagnetic brake, "gravity fail safe system," complete with solenoid.
- While maintaining the function of normal daily use, the FDCP03 signals through an sound visual alarm, the gravity descent of the curtain, protecting both people and buildings.
- Smoke detectors are managed by the control unit for a maximum absorption of 2.5 amps.





**The first European  
producers of  
Fire shutters and  
Fire Curtains  
EI 60 and EI 120**

**Blackfire® è un marchio Conegliano Group Srl**

Via Campolongo N.1/E - Z. I. Ramera  
31010 - Mareno di Piave (TV) Italia  
Tel. +39 (0) 438 4985

commerciale@blackfireitaly.it  
**www.blackfireitaly.it**

